



OWNER
 MORGAN WHALEY, LLC
 200 BLUE PEARLWAY
 SUITE 200
 MEMPHIS, TN 38114
 TEL: 901-527-8082

LEGEND

- SHOWN FOR D.B.B.
- SHOWN FOR NEW
- CALCULATED POINT

ZONING/BUILDING SETBACKS

ZONING
 R-10
 MIN. FRONT SETBACK 10 FT.
 MIN. SIDE SETBACK 5 FT.
 MIN. REAR SETBACK 5 FT.
 MIN. FRONT YARD SETBACK 10 FT.
 MIN. SIDE YARD SETBACK 5 FT.
 MIN. REAR YARD SETBACK 5 FT.
 MIN. FRONT YARD SETBACK 10 FT.
 MIN. SIDE YARD SETBACK 5 FT.
 MIN. REAR YARD SETBACK 5 FT.

PERMITS/RECORDS	DATE	DESCRIPTION
1	12-21-20	RECORDS
2	12-21-20	RECORDS
3	12-21-20	RECORDS
4	12-21-20	RECORDS
5	12-21-20	RECORDS
6	12-21-20	RECORDS
7	12-21-20	RECORDS
8	12-21-20	RECORDS
9	12-21-20	RECORDS
10	12-21-20	RECORDS
11	12-21-20	RECORDS
12	12-21-20	RECORDS
13	12-21-20	RECORDS
14	12-21-20	RECORDS
15	12-21-20	RECORDS
16	12-21-20	RECORDS
17	12-21-20	RECORDS
18	12-21-20	RECORDS
19	12-21-20	RECORDS
20	12-21-20	RECORDS

CERTIFICATE OF APPROVAL FOR RECORDING
 I HEREBY CERTIFY THAT THIS PLAN HAS BEEN FOUND BY ME TO BE IN ACCORDANCE WITH THE REQUIREMENTS FOR THE PLANNING RECORD WITH THE EXCEPTION OF SUCH MATTERS AS ARE LISTED ON THE REVISIONS SHEET AND SUCH MATTERS AS ARE LISTED ON THE REVISIONS SHEET AND SUCH MATTERS AS ARE LISTED ON THE REVISIONS SHEET.
 DATE: 12-21-20
 SIGNATURE: [Signature]
 TITLE: REGIONAL PLANNING COMMISSIONER

CERTIFICATE OF STREET NAMES
 I HEREBY CERTIFY THAT ALL STREET NAMES SHOWN HEREON APPROVE BY THE SEVER COUNTY ENGINEERING DEPARTMENT, AND IN COMPLIANCE WITH THE REQUIREMENTS OF THE SEVER COUNTY ENGINEERING DEPARTMENT, AND IN COMPLIANCE WITH THE REQUIREMENTS OF THE SEVER COUNTY ENGINEERING DEPARTMENT, AND IN COMPLIANCE WITH THE REQUIREMENTS OF THE SEVER COUNTY ENGINEERING DEPARTMENT.
 DATE: 12-21-20
 SIGNATURE: [Signature]
 TITLE: ENGINEER

CERTIFICATE OF THE APPROVAL OF WATER SYSTEMS
 I HEREBY CERTIFY THAT THE WATER SUPPLY SYSTEM DETAILS OF PROPOSED DEVELOPMENT ARE IN ACCORDANCE WITH THE REQUIREMENTS OF THE SEVER COUNTY ENGINEERING DEPARTMENT, AND IN COMPLIANCE WITH THE REQUIREMENTS OF THE SEVER COUNTY ENGINEERING DEPARTMENT, AND IN COMPLIANCE WITH THE REQUIREMENTS OF THE SEVER COUNTY ENGINEERING DEPARTMENT.
 DATE: 12-21-20
 SIGNATURE: [Signature]
 TITLE: UTILITY ENGINEER

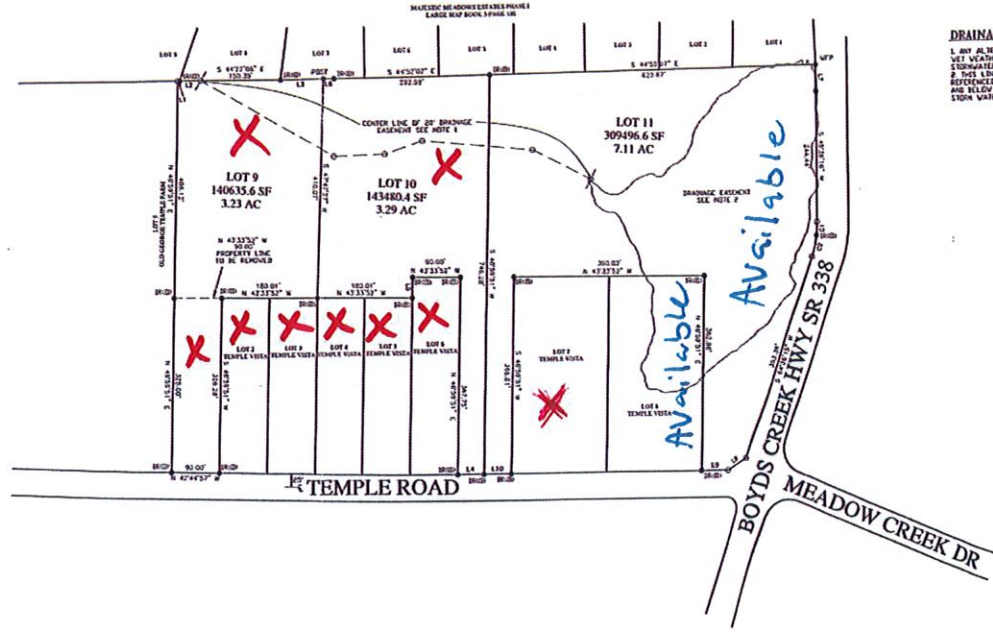
CERTIFICATE OF OWNERSHIP AND DEDICATION
 I, THE UNDERSIGNED, DO HEREBY CERTIFY THAT I AM THE OWNER OF THE PROPERTY SHOWN HEREON, AND THAT I HAVE HEREBY DEDICATED THE SAME TO THE PUBLIC USE OF THE SEVER COUNTY ENGINEERING DEPARTMENT, AND IN COMPLIANCE WITH THE REQUIREMENTS OF THE SEVER COUNTY ENGINEERING DEPARTMENT, AND IN COMPLIANCE WITH THE REQUIREMENTS OF THE SEVER COUNTY ENGINEERING DEPARTMENT.
 DATE: 12-21-20
 SIGNATURE: [Signature]
 TITLE: OWNER

SEVER COUNTY HEALTH DEPARTMENT
 APPROVAL IS HEREBY GRANTED FOR LOTS 9, 10, & 11.
 I HEREBY CERTIFY THAT THE PROPOSED DEVELOPMENT IS IN ACCORDANCE WITH THE REQUIREMENTS OF THE SEVER COUNTY HEALTH DEPARTMENT, AND IN COMPLIANCE WITH THE REQUIREMENTS OF THE SEVER COUNTY HEALTH DEPARTMENT, AND IN COMPLIANCE WITH THE REQUIREMENTS OF THE SEVER COUNTY HEALTH DEPARTMENT.
 DATE: 12-21-20
 SIGNATURE: [Signature]
 TITLE: HEALTH DEPARTMENT

LOT I
 I HEREBY CERTIFY THAT THE PROPOSED DEVELOPMENT IS IN ACCORDANCE WITH THE REQUIREMENTS OF THE SEVER COUNTY HEALTH DEPARTMENT, AND IN COMPLIANCE WITH THE REQUIREMENTS OF THE SEVER COUNTY HEALTH DEPARTMENT, AND IN COMPLIANCE WITH THE REQUIREMENTS OF THE SEVER COUNTY HEALTH DEPARTMENT.
 DATE: 12-21-20
 SIGNATURE: [Signature]
 TITLE: HEALTH DEPARTMENT

LOT II
 I HEREBY CERTIFY THAT THE PROPOSED DEVELOPMENT IS IN ACCORDANCE WITH THE REQUIREMENTS OF THE SEVER COUNTY HEALTH DEPARTMENT, AND IN COMPLIANCE WITH THE REQUIREMENTS OF THE SEVER COUNTY HEALTH DEPARTMENT, AND IN COMPLIANCE WITH THE REQUIREMENTS OF THE SEVER COUNTY HEALTH DEPARTMENT.
 DATE: 12-21-20
 SIGNATURE: [Signature]
 TITLE: HEALTH DEPARTMENT

DRAINAGE NOTES (PER PD 43 PG. 367)
 1. ALL ALTERNATES TO THE LOCATION AND/OR PHYSICAL CHARACTERISTICS OF THIS LOT WEATHER WEATHER CONFORMANCE MUST BE APPROVED BY THE SEVER COUNTY ENGINEERING DEPARTMENT.
 2. THIS LOTS ELEVATION AN ELEVATION OF 366 PER HAVD FOUR AND ALSO REFERENCED BY THE RECORDS DRAWING ANY ALTERNATE WITHIN THIS AREA AND BELOW THE ELEVATION OF 366 MAY BE APPROVED BY THE SEVER COUNTY STORM WATER DEPARTMENT.



SURVEYOR'S CERTIFICATION
 THIS IS TO CERTIFY THAT I HAVE CONDUCTED THE FEDERAL INSURANCE ADMINISTRATION FLOOD HAZARD BOUNDARY MAP AND THE DESCRIBED PROPERTY IS NOT LOCATED IN A SPECIAL FLOOD AREA.
 I HEREBY CERTIFY THAT THIS PLAN ACCURATELY DEPICTS A TRUE AND CORRECT SURVEY MADE UNDER MY SUPERVISION, THAT IT MEETS THE ACCURACY REQUIREMENTS OF THE RECORDS, PLANNING COMMISSION, AND THAT COORDINATE POINTS HAVE BEEN PLACED AT CORNER POINTS BY THE OPERATIONS OF THE RECORDS, PLANNING COMMISSION. I HEREBY CERTIFY THAT THIS IS A COMPLETE SURVEY AND THE SAME IS IN FULL ACCORDANCE WITH THE REQUIREMENTS OF THE SEVER COUNTY ENGINEERING DEPARTMENT.
 DATE: 12-21-20

ENGINEER No. 1
WC WHALEY, INC.
 SURVEYING
 433 WALL STREET, SUITE 4
 PO BOX 6439
 MEMPHIS, TN 38104-6439
 OFFICE (901) 453-1758
 FAX (901) 453-1758

NO.	DATE	DESCRIPTION
1	12-21-20	RECORDS
2	12-21-20	RECORDS
3	12-21-20	RECORDS
4	12-21-20	RECORDS
5	12-21-20	RECORDS
6	12-21-20	RECORDS
7	12-21-20	RECORDS
8	12-21-20	RECORDS
9	12-21-20	RECORDS
10	12-21-20	RECORDS
11	12-21-20	RECORDS
12	12-21-20	RECORDS
13	12-21-20	RECORDS
14	12-21-20	RECORDS
15	12-21-20	RECORDS
16	12-21-20	RECORDS
17	12-21-20	RECORDS
18	12-21-20	RECORDS
19	12-21-20	RECORDS
20	12-21-20	RECORDS

LOTS 9, 10, & 11
 RESUBDIVISION OF
 LOT 1
 TEMPLE VISTA
 &
 LOT 1R
OLD GEORGE TEMPLE FARM
 INSTRUMENT BOOK 5432 PAGE 519
 MAP BOOK 43 PAGE 367
 NINTH CIVIL DISTRICT
 SEVER COUNTY, TENNESSEE
 DECEMBER 21, 2020